

## Facts at a Glance

4<sup>th</sup> June 2016

KUR-World is a proposed integrated eco resort and innovation hub in Tropical North Queensland where the World Heritage Rainforest meets the Great Barrier Reef. Conceived by Australian company Reever and Ocean Developments Pty Ltd, the 626 hectare site will be transformed into a luxury tourism, health and education experience, unparalleled in the region.

Located in Myola, just 30 minutes from Cairns International Airport, KUR-World is designed around four lifestyle themes:

1. Luxury eco-tourism
2. Education and business
3. Rejuvenation, health and wellbeing
4. Adventure and recreation

Setting it apart from any other proposal in this region, KUR-World will have an array of different elements including university campus, world class equestrian centre, indoor and outdoor sporting facilities, health and wellbeing medical retreat with bio research facility, and outdoor adventure park.

The development will include residential areas for permanent residents, and short term accommodation ranging from 5-star luxury villas and a 3 or 4 star resort, through to medical suites, farm stay villas, student apartments and boarding cabins.

KUR-World will adopt ecologically sustainable development principles in recognition of the site's natural assets. Of the available land, only 37% will be developed and this will be concentrated on the land previously farmed.

Once fully operational, an average of 550 day visitors are expected, on top of around 1,000 overnight guests.

KUR-World will be a place for all ages. A place to live, play, study, rejuvenate or simply relax.

*Brought to you by*



Reever & Ocean Pty Ltd

Page 1 of 4

## Proposed Features and Activities

The **KUR-World Campus**, a tertiary education and sports facility, will have accommodation for up to 500 students across several apartment blocks, two and three storeys high. Apartments will be a mix of one and two bedrooms. The central building will become an architectural landmark and courses will include internationally recognised degrees in the fields of language, tourism, primary agriculture, horticulture, medicine, and sports science. The sporting facilities will include sports fields, outdoor tennis court, lap pool and covered training hall. The facilities will be suitable for a multitude of sports including soccer, tennis, swimming and basketball.

**KUR-World Equestrian Centre** will be a state of the art facility encompassing presentation area; covered and outdoor equestrian arenas; training area, riding yards and stables. Adjacent to the equestrian centre will be the **KUR-World Farm Theme Park** spread over 12 hectares around a dam, with villas set amongst roaming cattle, horses and other farm animals to provide a farm stay experience where guests can wander the paddocks, get close to the farm animals or go horse riding.

An **18 hole Resort Golf Course** designed by Pacific Coast Design with a clubhouse in a rainforest setting with restaurant, spa and tennis court.

**373 Residential Lots** of up to 2,000m<sup>2</sup> will be available. **Lifestyle** villas will be on lots ranging from 600m<sup>2</sup> to 2,000m<sup>2</sup>. **Premium** villas will be on 600m<sup>2</sup> and border the golf course. It is expected a number of both types of villas will be holiday let throughout the year.

**5-Star Eco-Resort** with 200 separate, luxury, double storey villas where the architectural styling will provide generous spaces and high quality finishes, with a focus on privacy and indulgence. Guests will be select from a mix of lagoon, golf course and rainforest villas and will have access to a day spa, high end restaurant, pools, as well as function centre.

**KUR-World Adventure Park** with a range of outdoor adrenalin pumping learning activities including a high ropes course, suspended bridges, zip lines and epic flying foxes through and over the rainforest canopy. There will also be a dedicated area for nature-based activities including bush walking.

**Three/Four star Leisure and Business Resort** with 270 rooms, restaurant, bar, swimming pool and resort amenities, including child friendly adventure facilities.

**KUR-World Village**, will comprise a signature plaza; restaurant, wine bar and viewing tower; day spa and small retail precinct with a general store for everyday items, boutique fashion and gift shops and a weekly market. The vision is to provide an opportunity to showcase the locally grown and manufactured tropical food, wine, arts and crafts. There will also be an amphitheatre; convention centre for conferences, weddings and events with a capacity for 500 people.

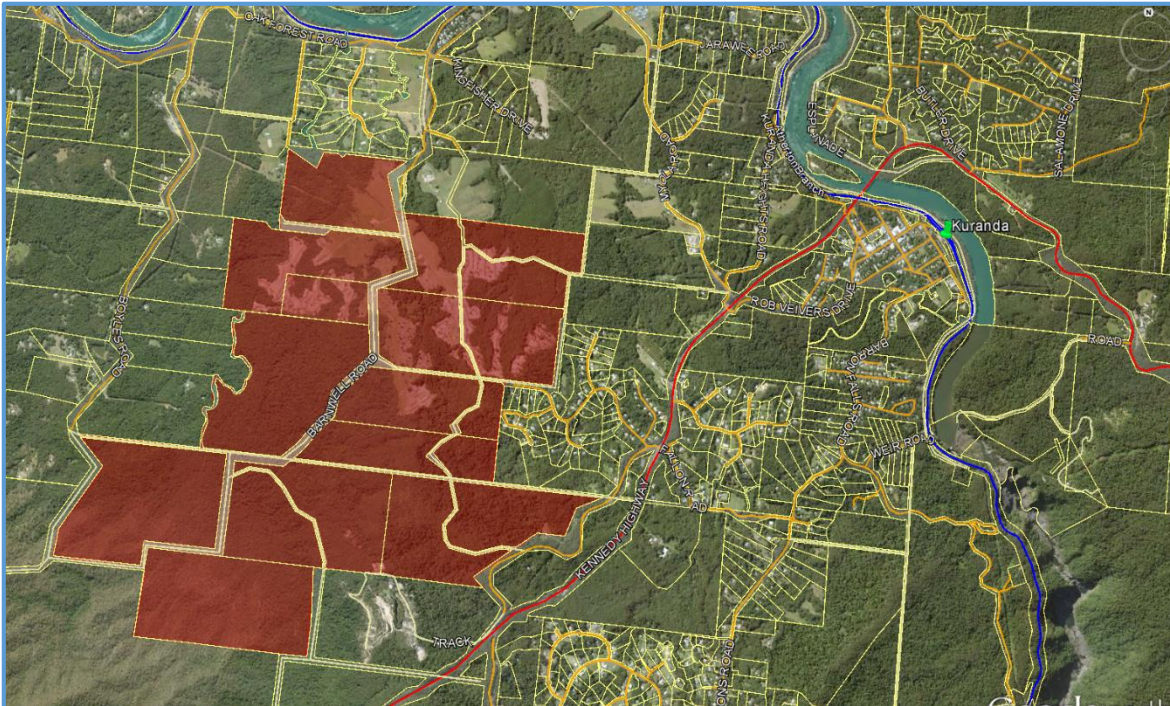
**KUR-World Health and Wellbeing Medical Retreat** will have accommodation for 60 guests in luxury medical suites. It will also include a 9,000m<sup>2</sup> health herbal laboratory consisting of a bioresearch facility; a clinic for treating patients with chronic illness; facial and cosmetic treatments; and body and health checks. The retreat will also include a herb garden for the cultivation of Chinese medicinal herbs to be used in conjunction with traditional treatments.

**KUR-World Rainforest Education Centre** with research facility and student boarding cabins with 300 beds split between 14 cabins intended for short-term stays. The centre will include communal kitchens, function spaces, combined dining and multi-use lecture spaces and research laboratories.



## Location

KUR-World will be spread over 12 separate allotments covering 626 hectares on Barnwell Road, Myola, in the Far North region of Queensland, Australia. It is two kilometres from Kuranda, a 30 minute drive from Cairns Airport (27km) Cairns and 30 minutes from Mareeba (37 km).



## Access to KUR-World

From the Kennedy Highway, existing access to KUR-World is via Myola Road, which leads to Barnwell Road. It is proposed a new road will be built and used as the main entry and exit point for KUR-World. This new road will start at the intersection of Myola and Kuranda Heights Roads, just off the Kennedy Highway.

The existing access to KUR-World via Barnwell Road will be used mainly by the residents and visitors to the Lifestyle Villas located directly adjacent to Barnwell Road but will also be used in some capacity during construction.

KUR-World visitors from Cairns International Airport will use a mix of road, Kuranda Railway and/or Skyrail.

## Development Approval Process

Reever and Ocean Developments Pty Ltd has applied to the Queensland Coordinator-General to declare KUR-World a coordinated project. There will be two main opportunities to provide feedback on the proposal.

1. The first is to have input in the Draft Terms of Reference for the Environmental Impact Statement. This is prepared by the Coordinator-General's office which has indicated this may occur in August 2016.
2. The second opportunity for feedback is to review and comment on the Environmental Impact Statement (EIS). Reever and Ocean is working towards completing the EIS by February 2017 which would enable the report to be released for public comment in March 2017.

The release of both documents for public comment will be advertised in local, state-wide and national newspapers.

Those people who are interested in the project can register via the Kur-World website to be notified when documents become available.

## Timing

At this very preliminary stage it is not possible to provide firm timelines as there many variables which can impact on the project's timing.

Broadly speaking, Reever and Ocean Developments Pty Ltd is working towards an approval by the end of 2017 which, if achieved, would enable construction to commence mid-2018.

## More Information

If you have any questions, or would like to register to receive updates on the project, you can do so via the website [www.kur-world.com](http://www.kur-world.com) or email [info@kur-world.com](mailto:info@kur-world.com).